



Kelebek
KIDS



#NewGenerationFashion



MAKE YOUNG ROOMS BEAUTIFUL WITH KELEBEK KIDS!

Are you ready to meet the New Generation Rooms that impress with their natural structure and fun design concept? Creating young people's dream rooms, Kelebek Kids brings practicality, naturalness and energy to your homes. Kelebek Kids New Generation Rooms, the choice of young people who want to create their own style with its modular structure, offers a timeless living space with its ergonomic structure, geometric lines, innovative designs that bring art into your home and extraordinary combinations of different colours.

Dream! Create your style! Feel the Comfort!



*Kelebek Teen Room:
the Fashion of
New Generation*

**FOR ALL
TEEN ROOMS**

**7
YEARS
WARRANTY**

SOLUTIONS TO IMPROVE QUALITY OF LIFE

Kelebek Kids products are manufactured according to international standards as a result of long R&D studies, taking into account safety factors as well as healthy and reliable design. The paint colours used do not contain heavy metals that affect children's health. High production quality and reliability are at the forefront of Kelebek products.

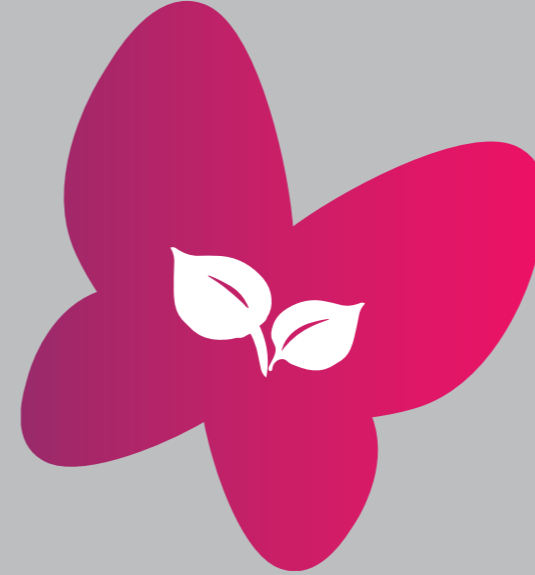


Another indicator of Kelebek's unique quality is the E-1 Quality Standards. Thanks to the E-1 quality standards developed to ensure that the little one of the house is surrounded by safe furniture, you will never be left behind.

Kelebek proves its quality reflected in every stage of the product from the materials it uses to the production process with the GS (Geprüfte Sicherheit) Quality Certificate. The GS Quality Certificate shows that the product is designed in a healthy and reliable manner in accordance with international standards, including the European Union.



The paint colours used in our furniture do not contain heavy metals that will affect your children and your health.



Non-toxic materials are used in paint colours and polishes in our furniture.

TSE is the certificate indicating that the products of the companies comply with the Turkish Standard. Kelebek has been awarded this certificate with its high production quality and reliability.



In the light of long R&D studies, we are aware of how important hygiene and safety elements are in the furniture we produce. We take these elements into consideration as well as design, and we give our consumers a 7-year warranty on our panel products.



Color the birds
however you like :)



NATURAL

DREAM!

Natural New Generation Room enriches the children's imagination with its natural structure and fun design understanding!

In addition to its look that will not be a distraction, this series, which we have prepared for the age group that is transitioning to school age, appeals to the player identities of children with its modular structure and supports their creativity.



#NewGenerationFashion





The monkey is hungry, he needs your help to show him the way to the banana.



CARPA

FEEL NATURE!

Carpa New Generation Room is ready to make beautiful children's rooms with its cute details and ergonomic design!

Designed with inspiration from the unique structure of nature, Carpa Series will be the best choice for your child with its natural colours, quality and natural materials. Carpa New Generation Room will be the choice of those looking for safe and sympathetic design.

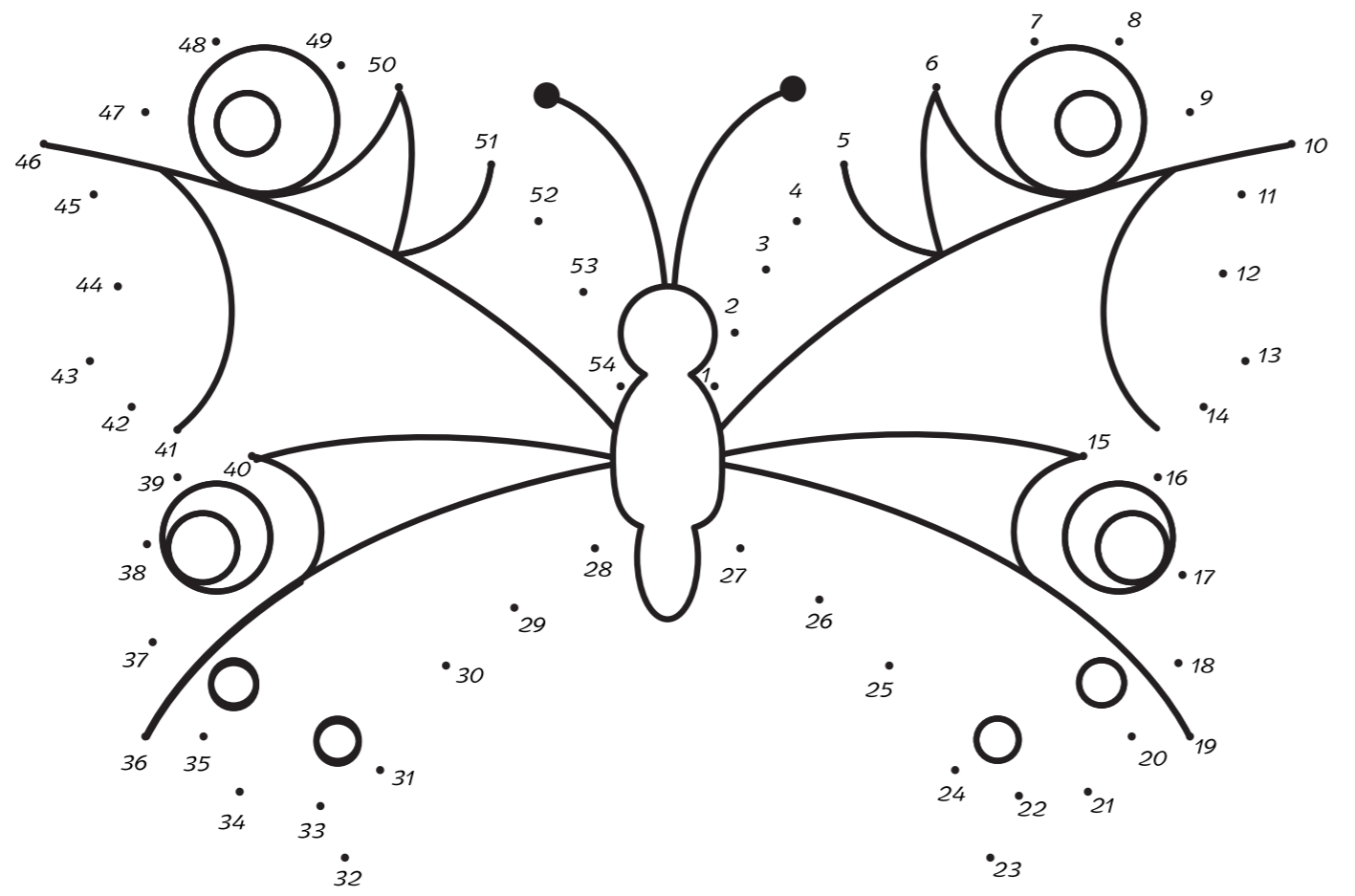
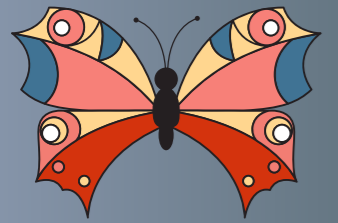


#NewGenerationFashion





Follow the numbers and complete the butterfly :)



MARTHA

EXPERIENCE SIMPLICITY!

Martha New Generation Room adds elegance and comfort to young people lives with its simple design and practical usage features!
Impressing with its elegant lines and soft color, Martha Series allows you to create a comfortable living space with its ergonomic structure and provides extra space for your child's belongings with its large interior cabinets, bedside table with drawers, table and dresser.

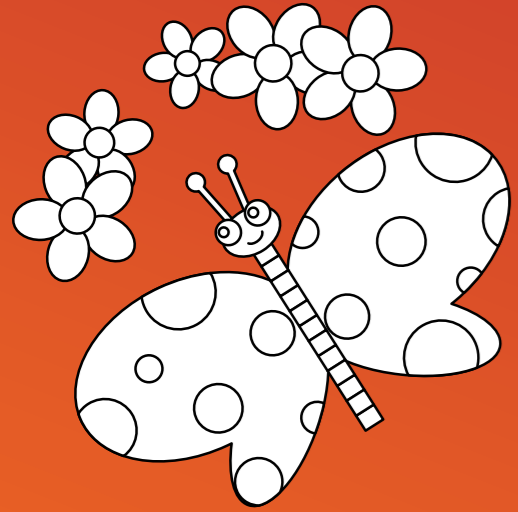


#NewGenerationFashion





Help the pens to paint the butterfly and the flowers :)



Angelic

CREATE YOUR STYLE!

Angelic New Generation Room creates a timeless living space for young people with its country style, white color and linear structure!

Ready to be the choice of young people wishing to create their own style with its modular structure, Angelic series offers young people a stylish and comfortable life with its calm design.



#NewGenerationFashion





Come on!

Let's find the
7 differences
between two
pictures.



Milky

GET INSPIRED!

Milky New Generation Room is a source of inspiration for young people who want a fairy-tale world with its pastel pink tones!

Designed with inspiration from the cactus form, Milky series adds a unique atmosphere to young rooms with its modular structure that makes life easier, special laser patterns on its covers and printed handle details.

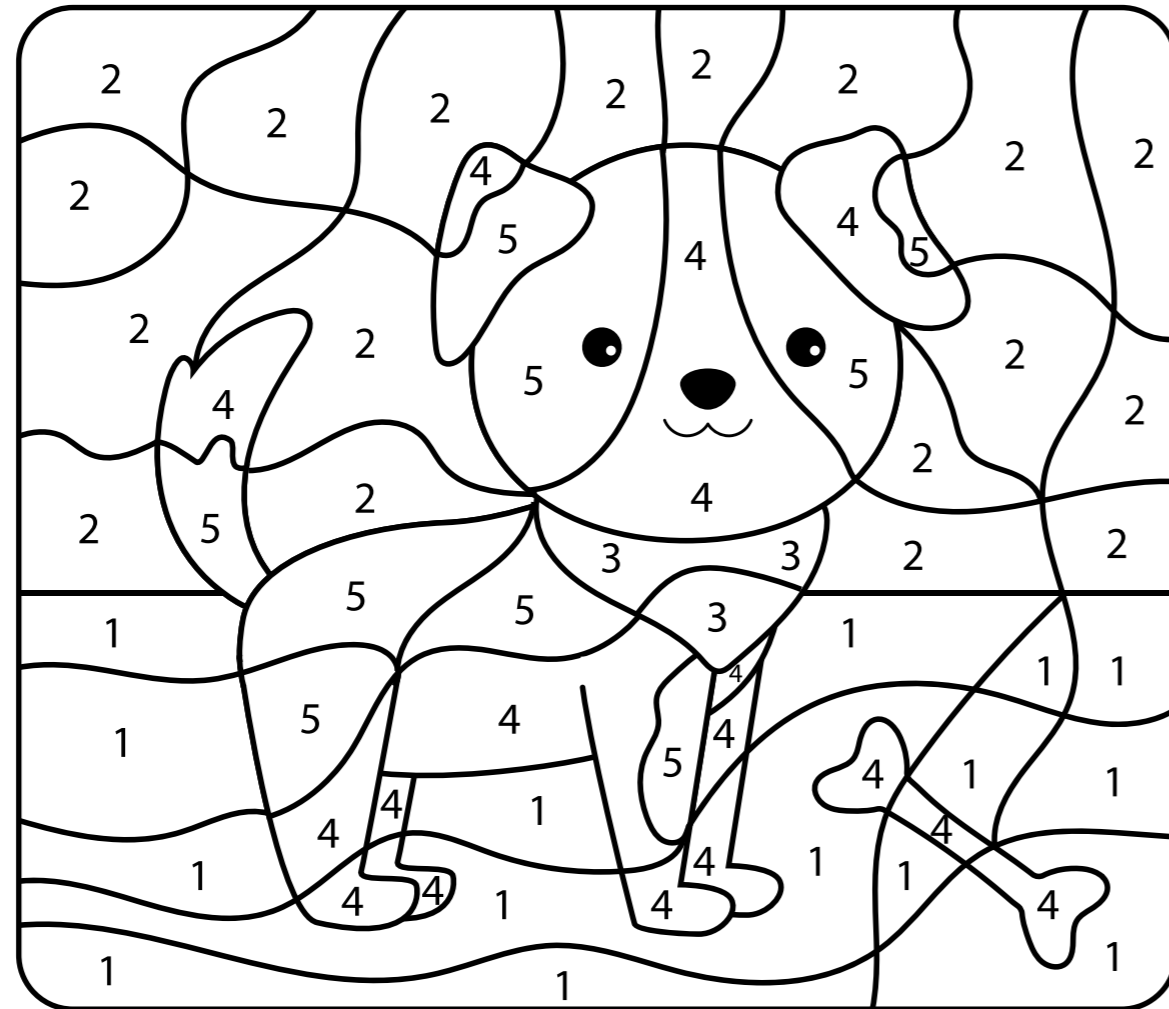
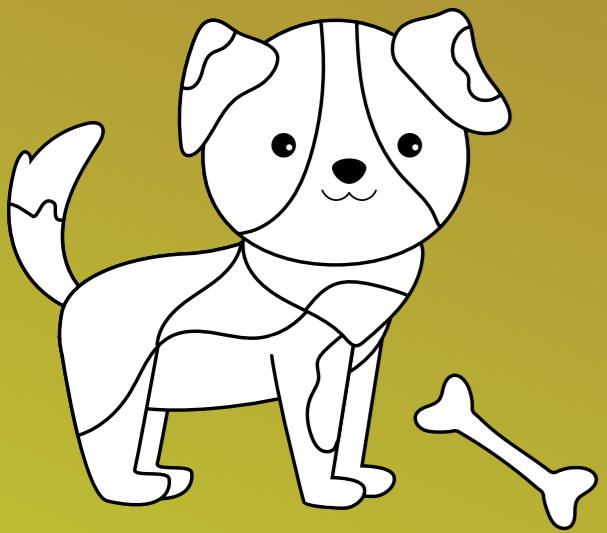
 Kelebek
KIDS

#NewGenerationFashion

 7
YEARS
WARRANTY



Paint by numbers to color the dog. Don't forget to paint the bone too :)



LIME

EXPERIENCE THE PRACTICALITY!

Lime New Generation Room brings elegance and energy to young rooms with its geometric line and yellow color details!

Making life easier with functional accessories, Lime series provides technological convenience with its USB charging unit on the work desk, while bringing naturalness to the living spaces of young people with its wooden-like body.

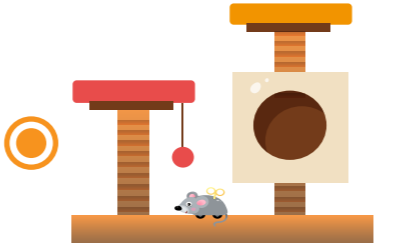
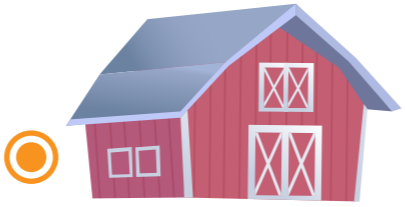


#NewGenerationFashion





Do you want to take the cat, dog, horse and bird to your home?



MixAge

FEEL THE COMFORT!

With its ergonomic structure and timeless look, Mixage New Generation Room will be the choice of young people wishing to make life valuable!

Impressing with its combination of different colors and extraordinary design, Mixage series offers aesthetics and comfort together.

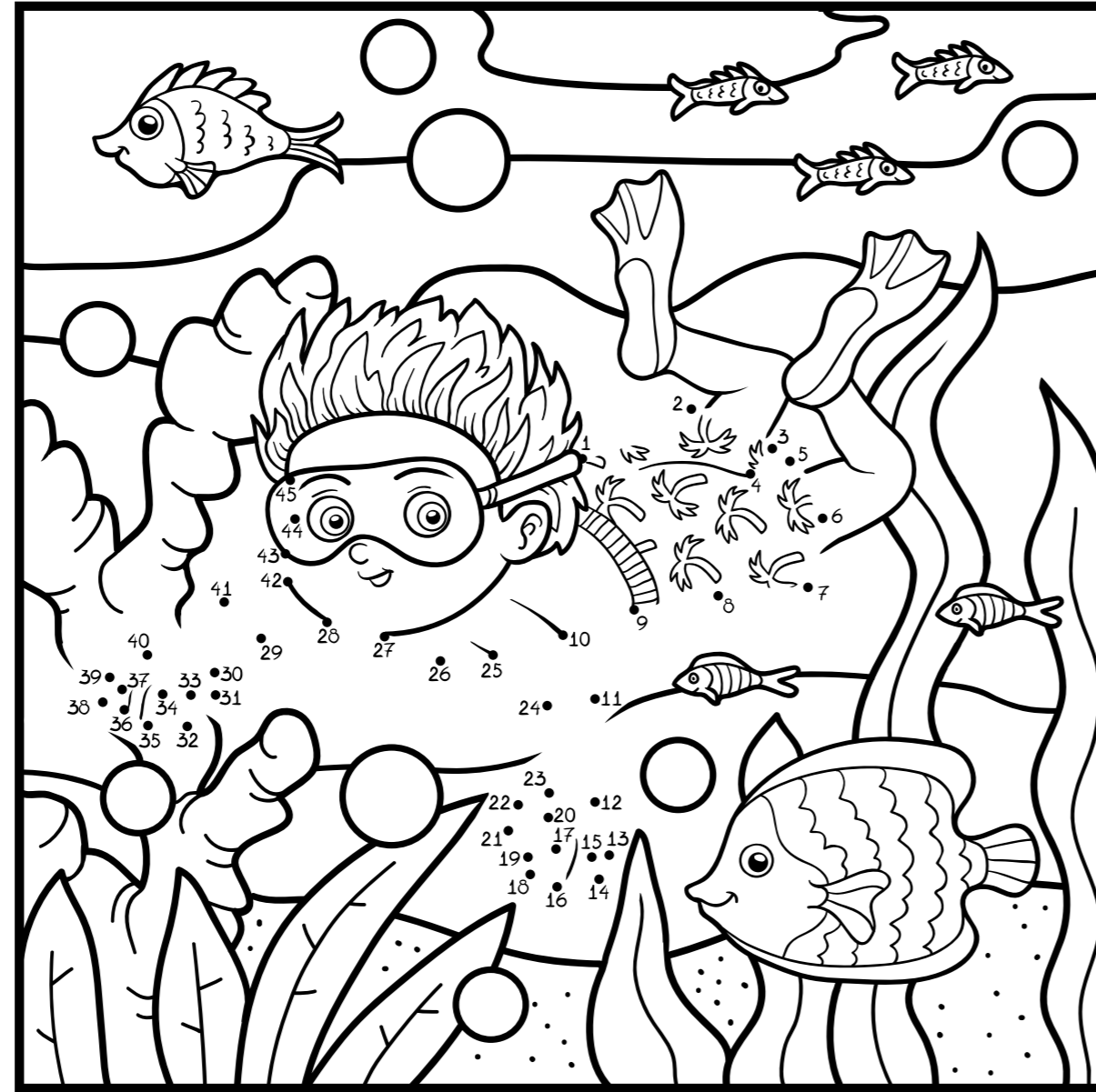


#NewGenerationFashion





Go over the numbers in order and complete the image, then paint it the color you want.



NIGERO

YOUNG AND DYNAMIC

While Nigero collection creates a calm living space with its natural stance, Nigero's study desk product which is ideal for young people, with a large drawer makes life easier. Peace and aesthetics created by oak and white color come to the fore in this collection, where all unnecessary details are avoided. While the bedstead is used together with fabric and wood, the headboard has a wipeable surface. Nigero's wardrobe doors, which can be increased according to the need, is offered to the taste of young people and whoever feels young at an affordable price.

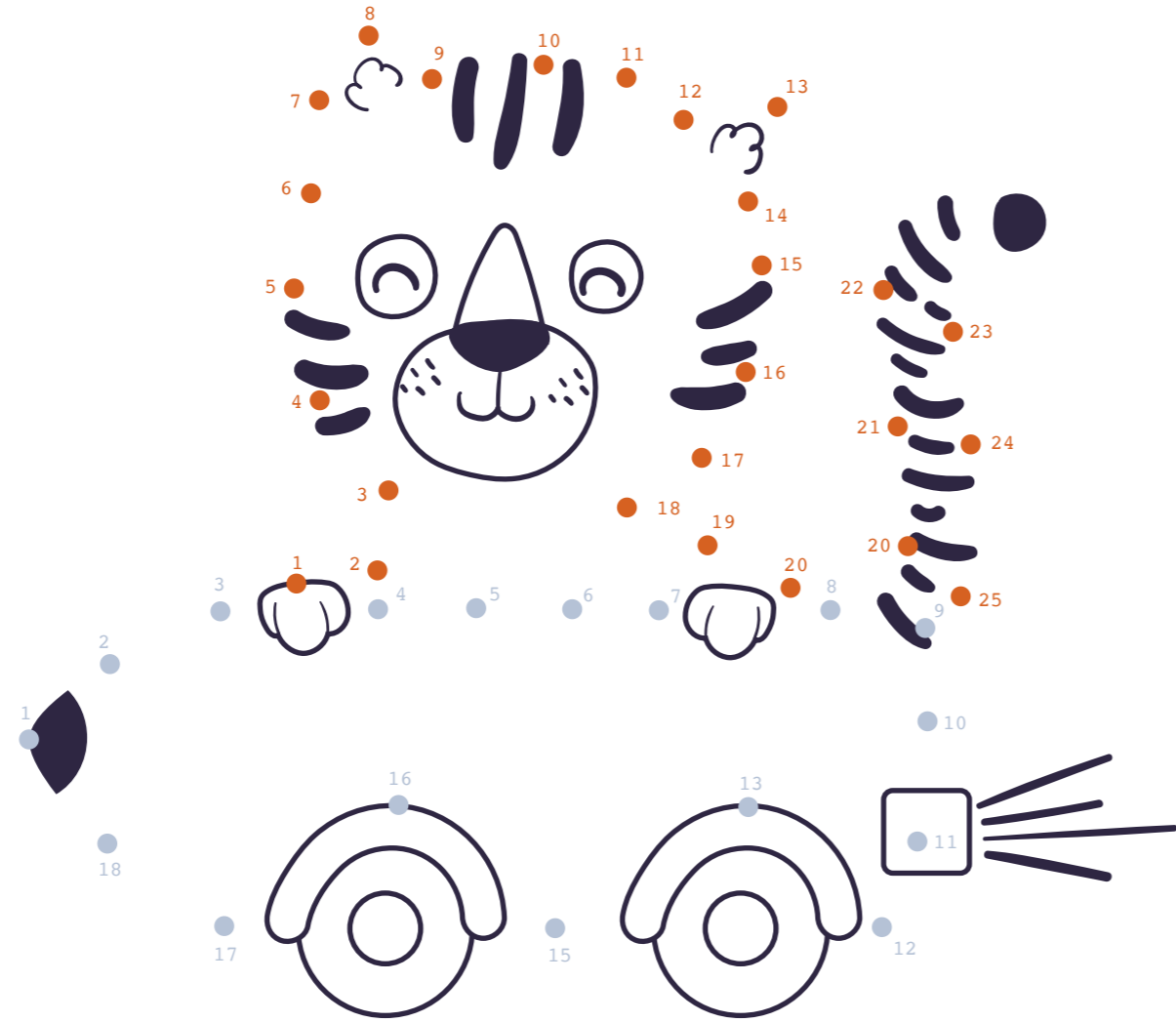


#NewGenerationFashion





Combine the numbers and paint :)



PIENA

FEEL THE MINIMALISM!

Standing out with its minimal lines, the Piena Young Room adds joy to the lives of young people with a modern style. While bringing nature to your living space with the use of pine material and linen fabric, it adds a mysterious atmosphere to your home with the details dominated by black color. Reflecting the richness of the dynamic loft style, the Piena Young Room also provides ease of cleaning with the metal feet used in all the pieces.

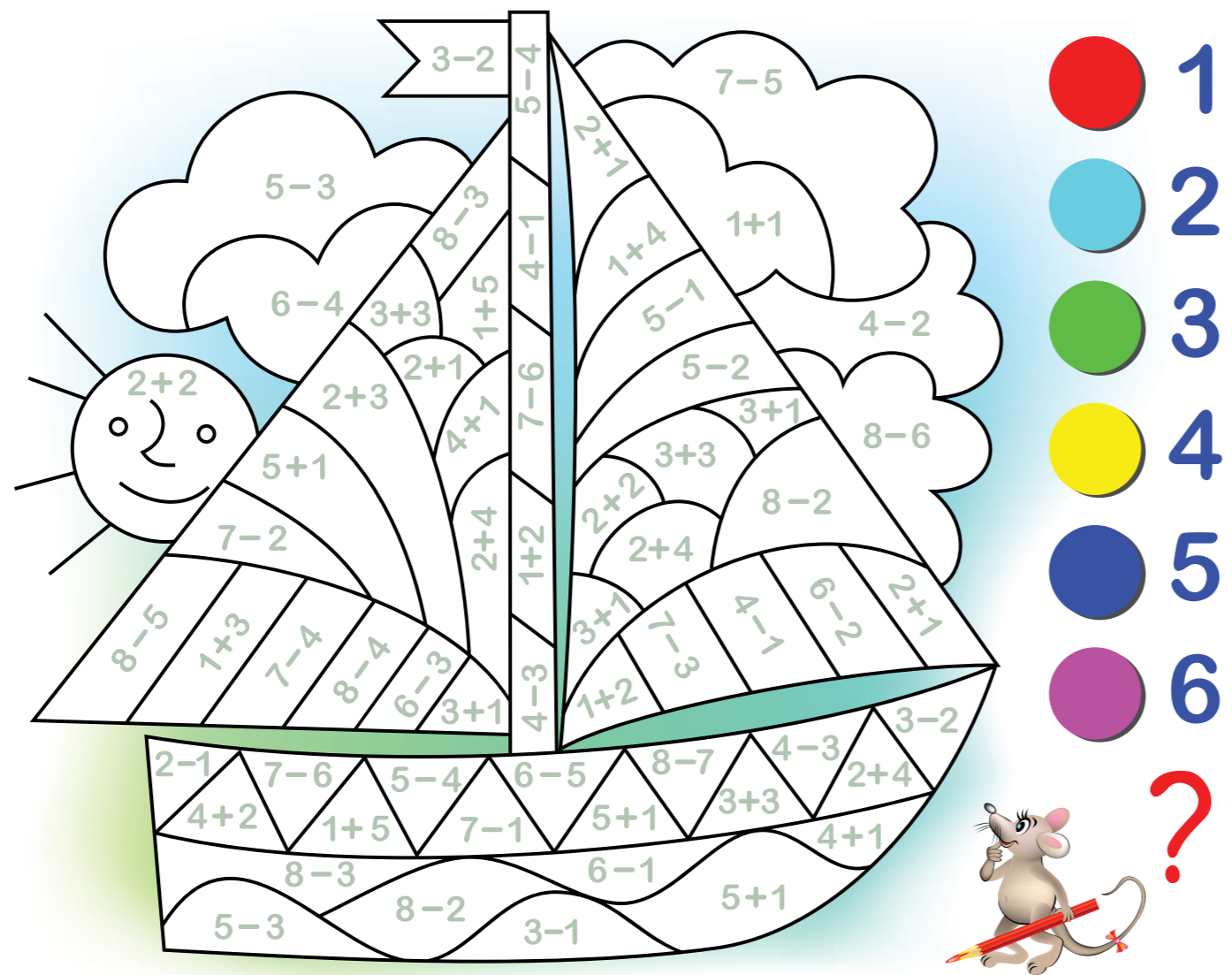


#YeniNeslinModası





Do the additions
and paint with the
numbers you get :)



Angelic Dark

CREATE YOUR STYLE!

Angelic Dark New Generation Room offers elegance and grace together with its country style, anthracite color and linear structure!

Ready to be the choice of young people wishing to create their own style with its modular structure, Angelic series creates a unique living space for young people with its calm design.



#NewGenerationFashion





Waldorf Toys

RUDOLF STEINER

The Waldorf Approach was founded in 1919 by the Austrian thinker Rudolf Steiner. Steiner argued that the devastating effect of a disaster such as the First World War could only be overcome by the creation of a “new man”. According to him, a “new man”, hence a new world, could only be created with a new education system. The Waldorf Approach aims to enable children to reveal themselves physically and mentally, to grow up completely according to their own conditions, and to develop in a balanced and multifaceted way. It attaches importance to supporting the individuality, self-confidence and personal integrity of her children.

RUDOLF STEINER

The Waldorf Approach was founded in 1919 by the Austrian thinker Rudolf Steiner. Steiner argued that the devastating effect of a disaster such as the First World War could only be overcome by the creation of a “new man”. According to him, a “new man”, hence a new world, could only be created with a new education system. The Waldorf Approach aims to enable children to reveal themselves physically and mentally, to grow up completely according to their own conditions, and to develop in a balanced and multifaceted way. It attaches importance to supporting the individuality, self-confidence and personal integrity of her children.

WALDORF EDUCATION

Waldorf Approach aims to develop children socially, emotionally, morally, physically and mentally in a multifaceted way by removing basic education from a single type and turning it into an art. The individuality, self-confidence and emotional integrity of children are carefully supported. According to this system, it is accepted that children learn through art and physical movement, and they enrich their lives by experiencing and exploring. In addition, it is aimed that children gain a sense of social belonging not by competing with each other, but by respecting and helping each other.

WALDORF TOYS

The first step of Waldorf Approach, which will enable the creation of the new man, was taken when Emil Molt invited Steiner to his factory to give a conference to his workers. At the end of the conference, the workers asked Steiner to teach children in line with this new approach. This education would not only provide vocational skills, but also ensure the integrity and strength of personality, emotions and thoughts, as well as be an education to develop consciousness and liberate the self. The primary school, which would operate in line with Steiner’s principles, opened in September 1919 with 253 students. When Steiner died in 1925, the number of students reached 800. Today, about 900 schools in the world provide education with the Waldorf Approach. Although these schools, which were opened in different parts of the world, are structured by the culture of the geography they are in, they adhere to all the basic principles of the Waldorf Education System.

WALDORF PRINCIPLES

Life is a race, yet, children are not racehorses. According to Steiner, children are the book that best describes teaching for teachers. Accordingly, he advises teachers not to learn to be educators from a book other than the children themselves. According to him, every child has different individual characteristics and superior abilities. While planning the educational process, it should be taken into account what children can learn, not what they should learn. It is not aimed that children compete with each other, but that each of them develops the abilities they have and brings them to the best level. Include art in the life of children. One of the vital parts of the Waldorf Approach is art. Adding art to children’s lives means creating a time and an environment where they can play creative games. This creativity themed game-based process of experience has a very important place for children to discover their individual ability.

Waldorf Toys



Waldorf
Wooden Rainbow Stacker 12 Piece



Waldorf
Wooden Basic Blocks 11 Piece



Waldorf
Wooden Rainbow Stacker 6 Piece



Waldorf
Wooden Basic Blocks 5 Piece



Waldorf
Wooden Semicircle 5 Piece



Waldorf
Wooden House Blue Roof Stacker

Waldorf Toys



Waldorf
Wooden House Rainbow Stacker



Waldorf
Wooden House Purple Roof Stacker



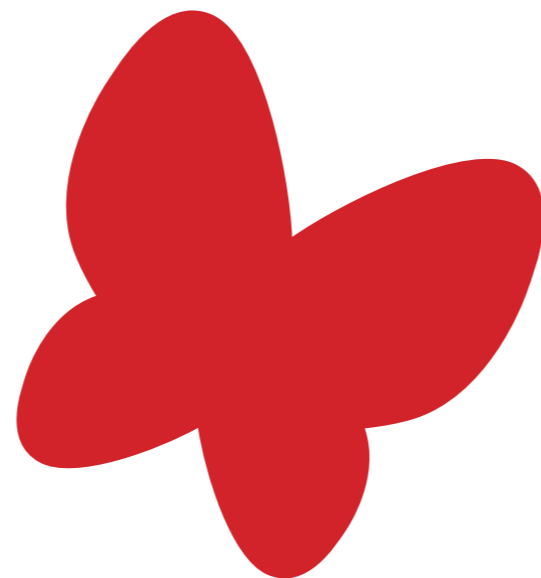
Waldorf
Sunset Blocks Puzzle Toy



Waldorf
Wooden Coral Toy - Lilac



Waldorf
Wooden Bungalow Toy - Green



Let children communicate with nature

According to the Waldorf education approach, children primarily develop physically. Development of intelligence continues around physical development until a certain age. Physical development can only be achieved through physical activities. While children develop physically playing in outdoor areas, they also develop mentally through the process of play making, and their creativity is strengthened. It is vital for children to connect with nature and to open up their perceptions of life. Furthermore, the process of connecting with nature is important for children to discover and understand all living and non-living beings in life, thus it is also significant in terms of their self-interpretation.

Let children have simple routines

Every day in Waldorf education begins with a “circle time”. Circle time is a special period of time when, for example, children sing a song or nursery rhyme on certain themes, concepts, such as the seasons, do movement exercises, or play finger games. During this period, they unhurriedly perform their daily routine. This routine creates a safe space for children, so it allows them to spend their days more actively and efficiently.

Encourage children to play

According to Waldorf education, the simpler and more natural the plaything is, the higher the added power of creativity skills. Steiner emphasized that playthings should be natural and give children the highest level of sensory experience. According to him, a simple and open-ended plaything (passive game model) stimulates child’s imagination develop their imagination so that they can create other objects over time, for example, instead of giving a wooden horse to a child, giving him/her a piece of a stick that (s)he can ride on like a horse causes the child’s imagination to strengthen. The child can ride this stick as a horse for a while, and another time (s)he can build a different game by imagining this stick just like it was a bus. In short, how to play with a toy is entirely up to the child’s imagination. Waldorf education supports simple and natural toys that are accessible to all, such as pinecones, shells, corncobs, string, rags and handkerchiefs, sticks and branches, wood blocks, stones, and pieces of cardboard.

Tell stories to children

Waldorf education emphasizes that it is more important to tell the story than to read it from a book. You can tell children a story that you know, or you can create a completely new story using your imagination during the narration. Telling stories to children will develop their imagination and enrich their inner world. If creating a story challenges you, you can also tell simple stories that you remember from your own childhood. But rest assured, as the narration is repeated, you will get used to it, and over time your creativity will be riveted.

TOYS

Waldorf toys are manufactured in accordance with the Waldorf understanding of education. One of the most important things in this educational understanding is the concept of play making. Because in this process, the child’s creativity will develop, they will discover themselves and develop mentally and physically. Waldorf toys are 100% natural. The most basic issue is to ensure that the child has a bond with nature and that this bond develops. As Naturel Wood, we are proud to introduce you the Waldorf Toy line. Produced entirely adhering to the Waldorf education concept, our toy series is designed to support the imagination and creativity of our children. Offered in two groups; painted and unpainted, the Waldorf toys encourage children to design freely and develop their power of thinking. Our painted products are colored with special paints that have passed CE and EN71-3 certification tests. They are organic and healthy. Even if children bite toys or put them in their mouth, the body cannot absorb the paint.

Lighting



Lime Young Desktop Black Moonlight
Metal Body



Mixage Desk Lamp
Fabric head, metal body



Milky Desktop Lighting
Metal body, pattern printed fabric head



Mixage Ceiling Lamp
Fabric head



Milky Ceiling Lighting
Pattern printed fabric head



Natural Ceiling Lighting
Pattern printed fabric head, plexi accessories



Carpa Ceiling Lighting
Wooden hoop, animal figures are used.



Tombo Play Tent

4 wooden slats, 100% cotton fabric tent, cotton stick tying rope were used.



Tombo Floor Cushion

Made from 100% cotton fabric.



Oompa Rabbit Toy

Produced from raw cotton fabric by hand, machine stitching.



Dino Dinosaur Toy

Produced from raw cotton fabric by hand, machine stitching.



Tombo Round Floor Cushion

Made from 100% cotton fabric.





**WE ADD COLOR TO
THEIR WORLD**

7
YEARS
WARRANTY

 **Kelebek**
KIDS

Our commercial
film scan qr code
to watch



www.kelebek.com



/ kelebekmobilya

